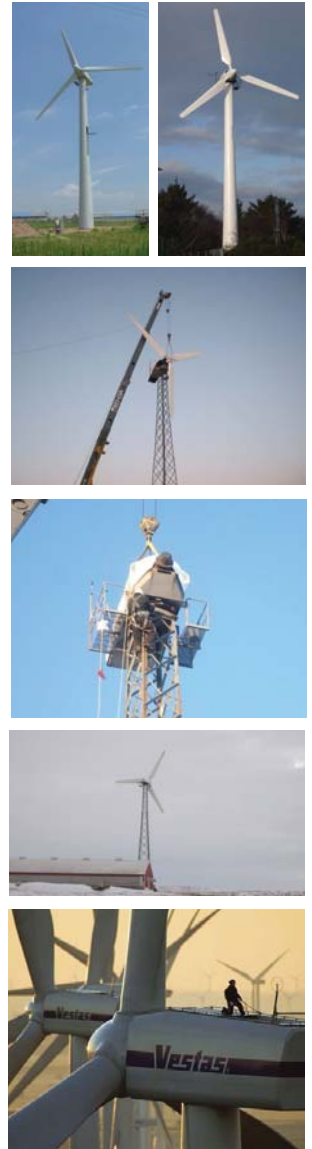


Presenting The Vestas V-15... 'Power With Wind Today For A Green Tomorrow'



Vestas®

GENERAL SPECIFICATIONS	
	VESTAS V-15
Rotor Diameter	50 feet (15.3 m)
Wind Swept Area	1,972 ft ²
Rated Wind Speed	35 mph (16 m/s)
Cut-In Speed	8.9 mph (4.0 m/s)
Cut-Off Wind Speed	58 mph (26 m/s)
Survival Wind Speed	110 mph (50 m/s)
Blades	3-blade, upwind
Generator	35kW / 240V / 60Hz
Total Weight	16,720 lbs. Turbine: 7,700 lbs. Rotor: 2,420 lbs.
Tower Weight	6,600 lbs.
Estimated Annual Energy Output*	50,000-75,000-kWh @ avg wind 12 mph
TOTAL Installed Price[^]	\$ 190,000

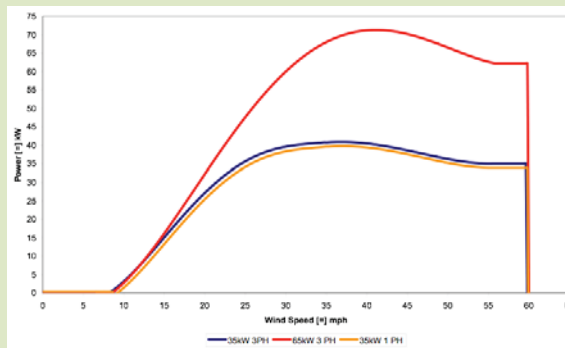


Vestas V-15™
Anatomy

- **BLADES:** Glass fibre reinforced polyester; Clockwise rotation @ 42 RPM; Airfoil - NACA 4415
- **BRAKES:** Aerodynamic brakes with Pivotable Tips; Centrifugal force activated
- **TOWER:** Hot galvanized lattice tower with 75-foot height; available 40-foot extension
- **GENERATOR:** Induction Generator with a Frequency of 60Hz
- **GEARBOX:** Type- 3 Stage Reduction Parallel Shafts; Gear ratio- 1:22.4
- **YAWING SYSTEM:** Active Yaw with electronic control Wind Vane; Speed- 72 degrees / min.



- 20+ Service Life
- Operates in harsh weather
- 5-Year Ltd. Warranty
- Professionally remanufactured
- Battery or Direct Connect
- Original parts where necessary



As global turbine manufacturers grow & produce larger units, smaller-sized turbines are discontinued. A remanufactured wind turbine is the perfect solution! These units are suitable for powering large farms, community or commercial properties, and still perform as reliably as their reputable utility-sized counterparts. The energy capture of the Vestas V-15 wind turbine is exceptionally good across a wide range of wind speeds & comes installed on a 75' freestanding lattice tower. These remanufactured turbines are intended to withstand harsh weather conditions, including the coldest of Midwestern winters.

[^]Estimated installation price, subject to location & Site Assessment; all prices plus applicable state & local taxes. *Estimated Annual Energy Output based on average wind speed @ 12mph. *Every installation is unique to the property & structure. Professionally remanufactured by: Talk, Inc. in Sauk Centre, MN